

Epitope Tag Antibodies

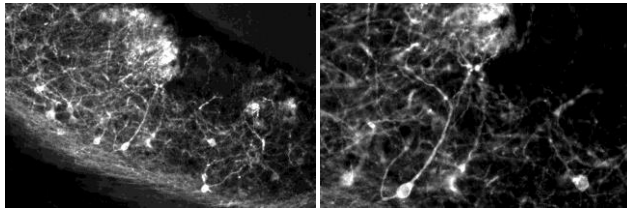
Nacalai USA, Inc. carries a family of epitope tag antibodies for the detection and purification of the recombinant proteins. Most of Nacalai's tag antibodies are highly specific mouse monoclonal antibodies.



Anti-GFP(Rat IgG2a), Mono (GF090R)

Clone : GF090R
Isotype : IgG2a (Rat)
Product form : Liquid
Immunogen : His-GFP (full length) fusion protein
Application : Immunohistochemistry 1:1000-1:2000
Western Blotting 1:1000-1:2000
ELISA 1:2000-1:20000

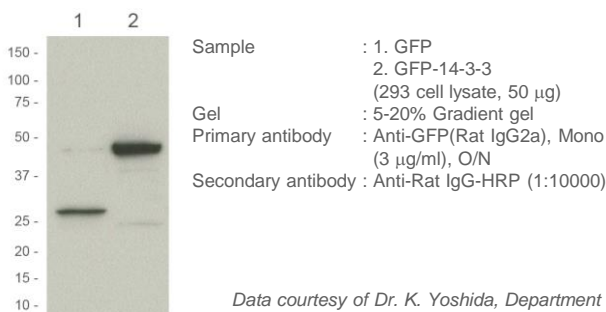
Immunohistochemistry



Sample : Mouse brain (nerve cell)
Primary antibody : Anti-GFP(Rat IgG2a), Mono (1:1000) RT, O/N
Secondary antibody : Anti-Rat IgG-Cy3 (1:300) RT, 1 hr
Blocking : 5% Normal goat serum/0.2% TritonX-100 in PBS
Fixing method : 4% Paraformaldehyde

Data courtesy of Dr. Y. Yoshihara, RIKEN Brain Science Institute

Western Blotting



Data courtesy of Dr. K. Yoshida, Department of Molecular Genetics, Medical Research Institute, Tokyo Medical and Dental University

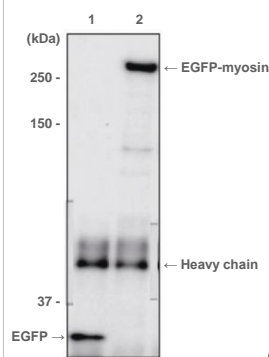
Reference

1. Yonehara, K. *Nature*. 469(7330):407-10 (2011)
2. Abe, K. et al. *Biol Reprod*. 85(5):1013-24 (2011)
3. Hide, T. et al. *Stem Cells*. 29(4):590-9 (2011)
4. Kurita, S. et al. *J Biol Chem*. 286(42):36297-303 (2011)
5. Wang, X. et al. *Glia*. 59(6):857-68 (2011)
6. Mochizuki, N. *Biol Pharm Bull*. 34(2):260-5 (2011)
7. Inamura, N. et al. *Dev Neurosci*. 33(2):118-29 (2011)
8. Vidaki, M. et al. *Cereb Cortex*. (2011)
9. Konno, A. et al. *Neurosci Res*. (2011)
10. Gotoh, H. et al. *Dev Biol*. 349(2):504-11 (2011)

Anti-GFP(Rat IgG2a), Mono (GF090R) Agarose Conjugate

Clone : GF090R
Isotype : IgG2a (Rat)
Product form : 1:1 suspension in Dulbecco's PBS(-)
Antibody protein : ca. 2 mg antibody/ml agarose

Immunoprecipitation



Data courtesy of Prof. A. Kakizuka, Laboratory of Functional Biology, Kyoto University Graduate School of Biostudies

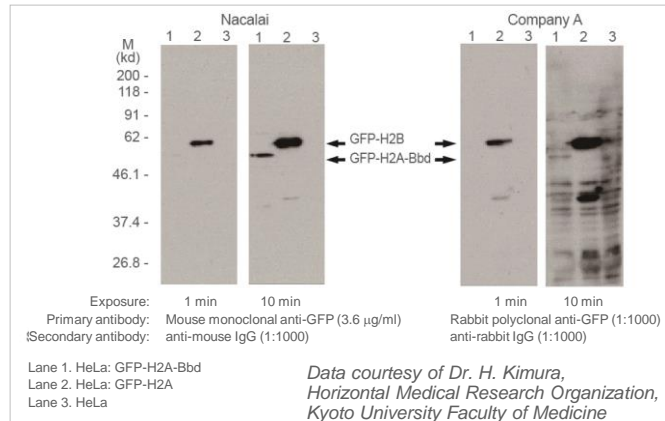
Reference

1. Kumeta, M. et al. *J Cell Sci*. 123(Pt 7): 1020-30 (2010)

Anti-GFP(Mouse IgG1-κ), Mono (GF200)

Clone : GF200
Isotype : IgG1-κ (Mouse)
Product form : Liquid
Immunogen : His-GFP (full length) fusion protein
Application : Western Blotting 1:1000-1:2000
ELISA 1:2000-1:20000

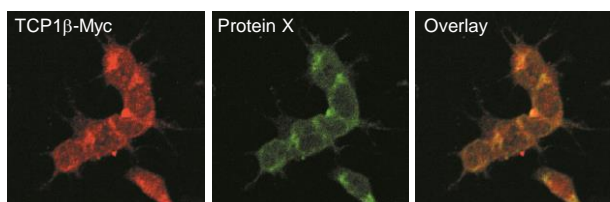
Western Blotting



Anti-c-Myc(Mouse IgG1-κ), Mono (MC045)

Clone : MC045
 Isotype : IgG1-κ (Mouse)
 Product form : Liquid
 Immunogen : c-Myc synthetic peptide [EQKLISEEDL] conjugated with KLH
 Application : Western Blotting 1:1000-1:2000
 Immunoprecipitation 1:400-1:1000
 Immunocytochemistry 1:100-1:200
 ELISA 1:2000-1:20000

Immunocytochemistry



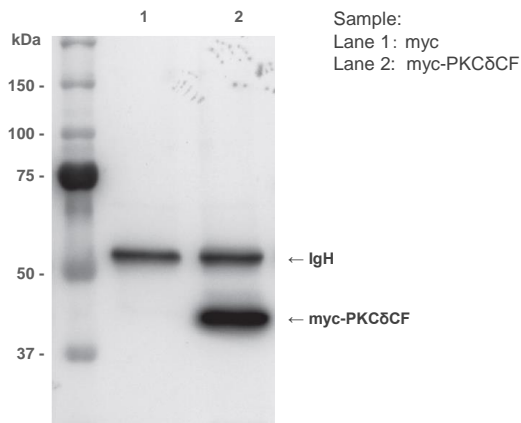
Sample : SH-SY5Y cell in which c-Myc-tagged TCP1β is expressed
 Primary Ab : Anti-c-Myc(Mouse IgG1-κ) (2.5 μg/ml)
 Anti-Protein X
 Secondary Ab : Anti-Fluor 546-conjugated antibody (1:400)
 Anti-Fluor 488-conjugated antibody (1:400)

Data courtesy of RIKEN Brain Science Institute

Anti-c-Myc(Mouse IgG1-κ), Mono (MC045) Agarose Conjugate

Clone : MC045
 Isotype : IgG1-κ (Mouse)
 Product form : 1:1 suspension in Dulbecco's PBS(-)
 Antibody protein : ca. 2 mg antibody/ml agarose

Immunocytochemistry

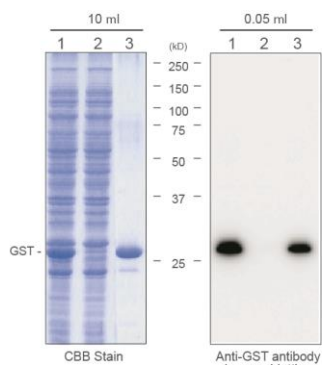


Immunoprecipitation : Anti-c-Myc(Mouse IgG1-κ), Agarose conjugate (1:500)
 Western Blotting : Anti-c-Myc(Mouse IgG1-κ)

Anti-GST(Mouse IgG2a-κ), Mono (GS019)

Clone : GS019
 Isotype : IgG2a-κ (Mouse)
 Product form : Liquid
 Immunogen : Glutathione-S-Transferase (GST)
 Application : Western Blotting 1:1000-1:2000
 Immunoprecipitation 1:400-1:1000
 ELISA 1:2000-1:20000

Western Blotting



Sample:
 1. Lysate from *E. coli* expressing GST protein
 2. Glutathione Sepharose flow-through fraction
 3. Glutathione Sepharose elution fraction

Gel : 12.5% SDS-PAGE
 Blocking : Blocking One (Nacalai Tesque), 1hr at RT
 Primary Ab : Anti-GST(Mouse) (1:2000 with Blocking One), 1hr at RT
 Wash : TBS-T (5 min x 3)
 Secondary Ab : Anti-Mouse Ig-HRP (1:1000 with TBS-T), 30 min at RT
 Wash : TBS-T (5 min x 3)
 Detection : Luminol Reagent (Santa Cruz)

*Data courtesy of Dr. Y. Shimizu
 The Institute of Medical Science, The University of Tokyo*

Anti-6xHis(Mouse IgG1a-κ), Mono (HI192)

Clone : HI192
 Isotype : IgG1a-κ (Mouse)
 Product form : Liquid
 Immunogen : 6xHis synthetic peptide [HHHHHH] conjugated with KLH
 Application : Western Blotting 1:1000-1:2000
 ELISA 1:2000-1:20000

Western Blotting



Sample:
 Lysate from Sf9 cells in which His-tagged Drosophila PTEN is expressed

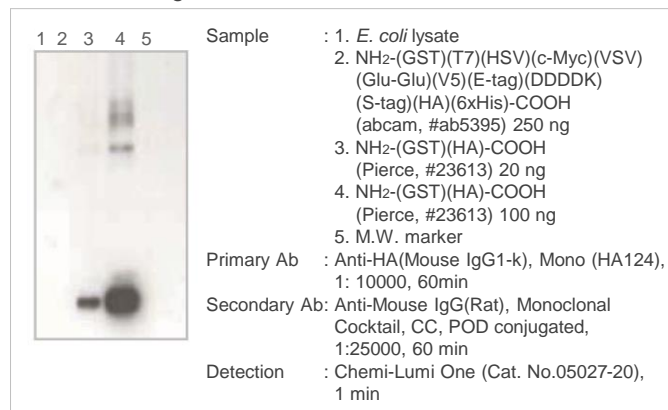
Filter : FluoroTrans [PALL]
 Blocking : 5% non-fat dry milk/PBS (30 min)
 Primary Ab : Anti-6xHis(Mouse IgG1-κ), Monoclonal (HI192)
 Wash : 0.25% Tween-20/TBS (10 min x 3)
 Secondary Ab : Anti-Mouse IgG-HRP (1:1000)/2% BSA/0.25% Tween-20/TBS (30 min)
 Wash : 0.25% Tween-20/TBS (10 min x 5)
 Detection : Luminol Reagent (Santa Cruz)

*Data courtesy of Dr. A. Maehama,
 The Tokyo Metropolitan Institute of Medical Science (RINSHOKEN)*

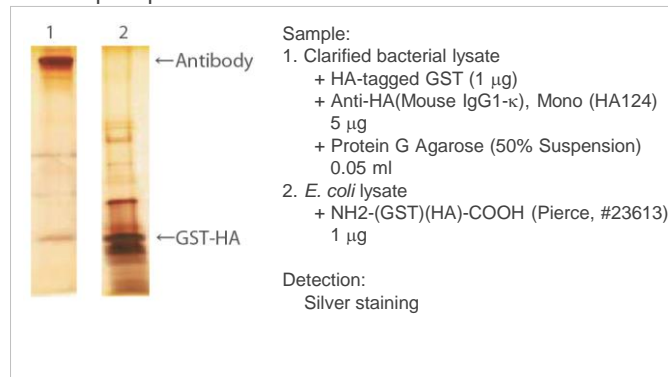
Anti-HA(Mouse IgG1a-κ), Mono (HA124)

Clone : HA124
 Isotype : IgG1a-κ (Mouse)
 Product form : Liquid
 Immunogen : Glutathione-S-Transferase(GST)-HA[YPYDVPDYA-COOH]
 fusion protein
 Application : Western Blotting 1:1000-1:2000
 ELISA 1:2000-1:20000

Western Blotting



Immunoprecipitation



Ordering Information

Product Name	Storage	Cat. No.	Qty.	Price (US\$)
Anti-GFP (Rat IgG2a), Monoclonal (GF090R)	4°C	04404-26	50 μg	161.00
		04404-84	200 μg	410.00
Anti-GFP (Rat IgG2a), Monoclonal (GF090R), Agarose Conjugate	4°C	06083-05	500 μg	483.00
Anti-GFP (Mouse IgG1-κ), Monoclonal (GF200)	4°C	04363-24	200 μg	298.00
Anti-c-Myc (Mouse IgG1-κ), Monoclonal (MC045)	4°C	04362-34	200 μg	298.00
Anti-c-Myc (Mouse IgG1-κ), Monoclonal (MC045), Agarose Conjugate	4°C	04145-55	500 μg	364.00
Anti-GST (Mouse IgG2a-κ), Monoclonal (GS019)	4°C	04435-26	200 μg	298.00
Anti-6xHis (Mouse IgG1-κ), Monoclonal (HI192)	4°C	04428-84	200 μg	298.00
Anti-HA (Mouse IgG1-κ), Monoclonal (HA124)	4°C	06340-54	200 μg	273.00